

TOSHIBA Transistor Silicon NPN Epitaxial Type (PCT process) (Bias Resistor built-in Transistor)

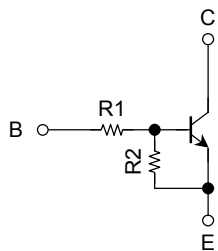
# RN1107FT, RN1108FT, RN1109FT

Switching, Inverter Circuit, Interface Circuit and Driver Circuit Applications.

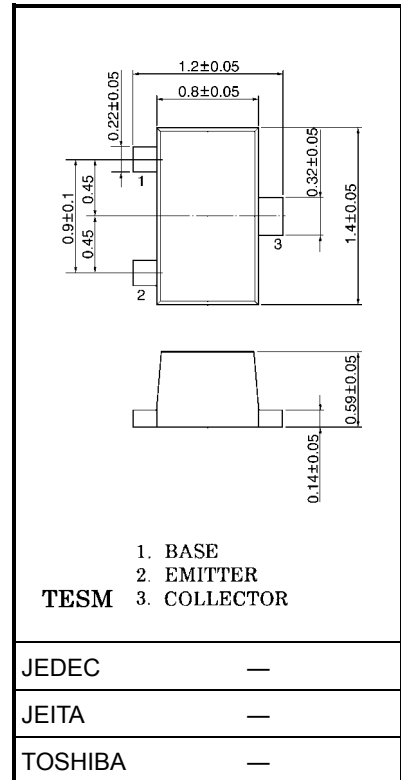
Unit: mm

- High-density mount is possible because of devices housed in very thin TESH packages.
- Incorporating a bias resistor into a transistor reduces parts count. Reducing the parts count enable the manufacture of ever more compact equipment and save assembly cost.
- Wide range of resistor values are available to use in various circuit designs.
- Complementary to RN2107FT~2109FT

## Equivalent Circuit and Bias Resistor Values



Type No.	R1 (kΩ)	R2 (kΩ)
RN1107FT	10	47
RN1108FT	22	47
RN1109FT	47	22



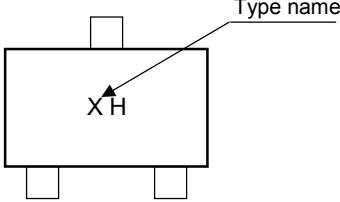
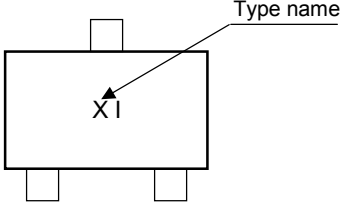
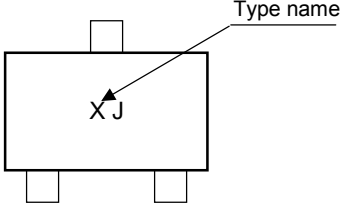
## Maximum Ratings (Ta = 25°C)

Characteristics		Symbol	Rating	Unit
Collector-base voltage	RN1107FT~1109FT	$V_{CB0}$	50	V
Collector-emitter voltage		$V_{CE0}$	50	V
Emitter-base voltage	RN1107FT	$V_{EB0}$	6	V
	RN1108FT		7	
	RN1109FT		15	
Collector current	RN1107FT~1109FT	$I_C$	100	mA
Collector power dissipation		$P_C$ (Note)	100	mW
Junction temperature		$T_J$	150	°C
Storage temperature range		$T_{stg}$	-55~150	°C

Note: Total rating

## Electrical Characteristics (Ta = 25°C)

Characteristics		Symbol	Test Condition	Min	Typ.	Max	Unit
Collector cut-off current	RN1107FT~1109FT	$I_{CBO}$	$V_{CB} = 50\text{ V}, I_E = 0$	—	—	100	nA
		$I_{CEO}$	$V_{CE} = 50\text{ V}, I_B = 0$	—	—	500	
Emitter cut-off current	RN1107F	$I_{EBO}$	$V_{EB} = 6\text{ V}, I_C = 0$	0.081	—	0.15	mA
	RN1108F		$V_{EB} = 7\text{ V}, I_C = 0$	0.078	—	0.145	
	RN1109F		$V_{EB} = 15\text{ V}, I_C = 0$	0.167	—	0.311	
DC current gain	RN1107F	$h_{FE}$	$V_{CE} = 5\text{ V}, I_C = 10\text{ mA}$	80	—	—	
	RN1108F			80	—	—	
	RN1109F			70	—	—	
Collector-emitter saturation voltage	RN1107FT~1109FT	$V_{CE(sat)}$	$I_C = 5\text{ mA}, I_B = 0.25\text{ mA}$	—	0.1	0.3	V
Input voltage (ON)	RN1107F	$V_{I(ON)}$	$V_{CE} = 0.2\text{ V}, I_C = 5\text{ mA}$	0.7	—	1.8	V
	RN1108F			1.0	—	2.6	
	RN1109F			2.2	—	5.8	
Input voltage (OFF)	RN1107F	$V_{I(OFF)}$	$V_{CE} = 5\text{ V}, I_C = 0.1\text{ mA}$	0.5	—	1.0	V
	RN1108F			0.6	—	1.16	
	RN1109F			1.5	—	2.6	
Transition frequency	RN1107FT~1109FT	$f_T$	$V_{CE} = 10\text{ V}, I_C = 5\text{ mA}$	—	250	—	MHz
Collector output capacitance	RN1107FT~1109FT	$C_{ob}$	$V_{CB} = 10\text{ V}, I_E = 0, f = 1\text{ MHz}$	—	3	6	pF
Input resistor	RN1107F	R1	—	7	10	13	k $\Omega$
	RN1108F			15.4	22	28.6	
	RN1109F			32.9	47	61.1	
Resistor ratio	RN1107F	R1/R2	—	0.919	0.213	0.232	
	RN1108F			0.421	0.468	0.515	
	RN1109F			1.92	2.14	2.35	

Type Name	Marking
RN1107FT	 A schematic diagram of a rectangular component with a top terminal and two bottom terminals. The marking 'XH' is centered on the component. An arrow labeled 'Type name' points to the 'H' in 'XH'.
RN1108FT	 A schematic diagram of a rectangular component with a top terminal and two bottom terminals. The marking 'XI' is centered on the component. An arrow labeled 'Type name' points to the 'I' in 'XI'.
RN1109FT	 A schematic diagram of a rectangular component with a top terminal and two bottom terminals. The marking 'XJ' is centered on the component. An arrow labeled 'Type name' points to the 'J' in 'XJ'.

**RESTRICTIONS ON PRODUCT USE**

000707EAA

- TOSHIBA is continually working to improve the quality and reliability of its products. Nevertheless, semiconductor devices in general can malfunction or fail due to their inherent electrical sensitivity and vulnerability to physical stress. It is the responsibility of the buyer, when utilizing TOSHIBA products, to comply with the standards of safety in making a safe design for the entire system, and to avoid situations in which a malfunction or failure of such TOSHIBA products could cause loss of human life, bodily injury or damage to property.  
In developing your designs, please ensure that TOSHIBA products are used within specified operating ranges as set forth in the most recent TOSHIBA products specifications. Also, please keep in mind the precautions and conditions set forth in the "Handling Guide for Semiconductor Devices," or "TOSHIBA Semiconductor Reliability Handbook" etc..
- The TOSHIBA products listed in this document are intended for usage in general electronics applications (computer, personal equipment, office equipment, measuring equipment, industrial robotics, domestic appliances, etc.). These TOSHIBA products are neither intended nor warranted for usage in equipment that requires extraordinarily high quality and/or reliability or a malfunction or failure of which may cause loss of human life or bodily injury ("Unintended Usage"). Unintended Usage include atomic energy control instruments, airplane or spaceship instruments, transportation instruments, traffic signal instruments, combustion control instruments, medical instruments, all types of safety devices, etc.. Unintended Usage of TOSHIBA products listed in this document shall be made at the customer's own risk.
- The information contained herein is presented only as a guide for the applications of our products. No responsibility is assumed by TOSHIBA CORPORATION for any infringements of intellectual property or other rights of the third parties which may result from its use. No license is granted by implication or otherwise under any intellectual property or other rights of TOSHIBA CORPORATION or others.
- The information contained herein is subject to change without notice.